



**LUMALI**  
E N G E N H A R I A



[www.lumali.com.br](http://www.lumali.com.br)



**LUMALI Engineering** accumulates, through its founders and team of engineers, vast experience in high-complexity engineering projects and services. With a firm commitment to quality, the company constantly strives for customer satisfaction, the improvement of its employees' quality of life, environmental preservation, and respect for society. Throughout this journey, LUMALI has been consolidating over a decade of hard work and dedication in the execution of both public and private projects.

When LUMALI was founded in 2011, its engineers and founders already had extensive experience, having served as technical leads for several highly significant projects across Brazil. Their undeniable know-how is evidenced by Technical Record Certificates (CAT) issued by the Regional Council of Engineering and Agronomy (CREA). The creation of LUMALI formalized this collective expertise, strengthening the company, which, over its 14 years of existence, has left an indelible mark in the realm of major construction projects, showcasing knowledge, quality, speed, and complete customer satisfaction.

**The year 2024 marks a new chapter in LUMALI Engineering's history, with the expansion of its operations and the reinforcement of its commitment to ethics and excellence. With the opening of a branch in Bahia, the company is expanding its national presence and strengthening its role in Northeastern Brazil. Furthermore, recognizing the growing demands of the renewable energy market, LUMALI, in partnership with GM Participações, has established DMGV Solar, a company specializing in pile driving for solar farms, demonstrating its pioneering spirit and vision for the future.**

Further reinforcing its commitment to ethics and excellence, LUMALI Engineering is also celebrating the 2024 completion of its **Compliance Program implementation**. This initiative, fundamental to the company's ethical and responsible management, permeates all areas of LUMALI, reinforcing the values that have always guided the company and fostering an even more transparent and integrity-driven work environment. The Compliance Program ensures operational security, adherence to applicable laws and regulations, and solidifies LUMALI's reputation as an ethical, transparent, and responsible company.

With the expertise of its team, the strength of its values, and its continuous pursuit of innovation, **LUMALI Engineering** continues on a path of success, building a more sustainable and promising future.




## Our Actions Speak Louder Than Our Words

### CORPORATE HEADQUARTERS OF THE COMPANY

Avenida Shopping & Office  
Dom Luis Avenue, 300 - Room 912  
ZIP Code: 60160-196 | Fortaleza - CE, Brazil  
Phone: +55 85 3103.0055

### OFFICE

Edifício Mundo Plaza Torre Empresarial  
Tancredo Neves Avenue, 620 - Store 3305  
ZIP Code: 41820-020 | Salvador - BA, Brazil  
Phone: +55 85 3103.0055

 [www.lumali.com.br](http://www.lumali.com.br)  
 [lumali@lumali.com.br](mailto:lumali@lumali.com.br)  
 [@lumaliengenharia](https://www.instagram.com/lumaliengenharia)





01

**OUR DRIVING  
FORCE**

# 01 OUR DRIVING FORCE

## MISSION

To build projects with passion and excellence, through sustainable, transparent, and high-quality practices, delighting clients, employees, suppliers, and the community, while ensuring solidity and the generation of results.

## VISION

To be a benchmark in Brazil through sustainable practices, recognized for our construction standards and high customer satisfaction.

## VALUES

- Ethics and transparency;
- Customer focus;
- Quality and innovation;
- Credibility;
- Continuous development;
- Team spirit and commitment;
- Social responsibility.





# 02

OUR MAIN  
ACHIEVEMENTS

---

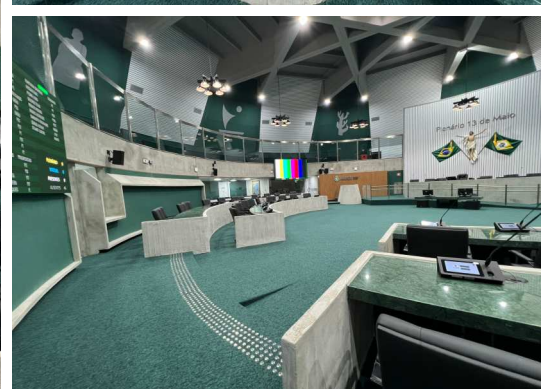
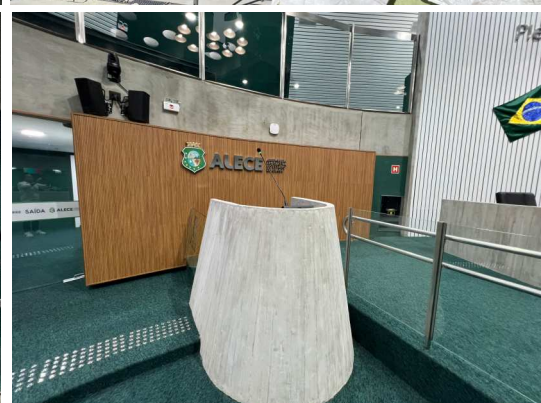
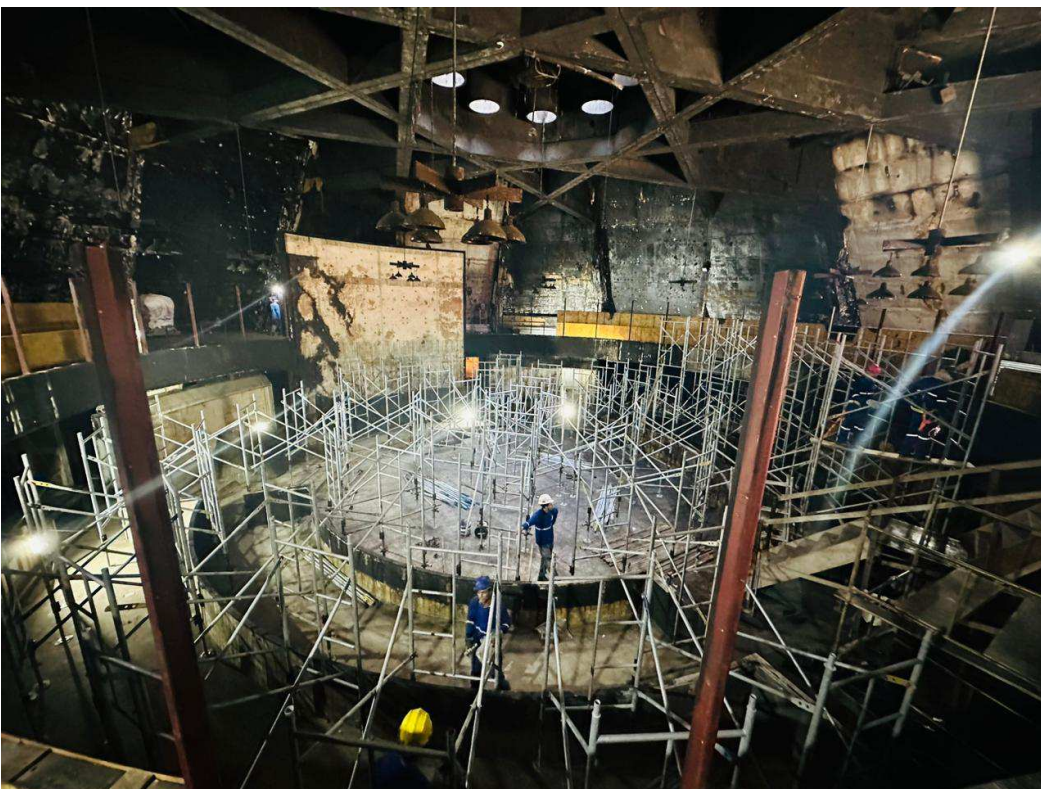
**CIVIL  
CONSTRUCTION  
WORKS**





**Project Features:**

1. Comprehensive modernization to better meet the demands of the population and employees;
2. Installation of a new and efficient air-conditioning system, ensuring thermal comfort in all areas of the building;
3. Complete update of the electrical system, which now meets the highest standards of safety and energy efficiency;
4. Creation of strategically positioned emergency exits and installation of fire-rated doors;
5. Development of aesthetic work, resulting in a space that is not only functional but also visually appealing.



**COMPLETED  
PROJECT**





#### **Building 01 - 9,631 m<sup>2</sup>**

- Museum
- Memorial
- Permanent and temporary exhibition areas
- Collection of rare works
- Social area
- 10 auditoriums with 150 seats each
- Underground parking with 250 spaces

#### **Building 02 - 10,400 m<sup>2</sup>**

- Theater with 1,580 seats
- Dance, music, and choir rooms
- Social area
- 2 auditoriums with 150 seats each
- Underground parking with 250 spaces

#### **Building 03 - 31,500 m<sup>2</sup>**

- 19-story tower
- In-person, virtual, and hybrid classrooms
- Press Museum
- Social area
- 10 auditoriums with 150 seats each
- Underground parking with 300 spaces



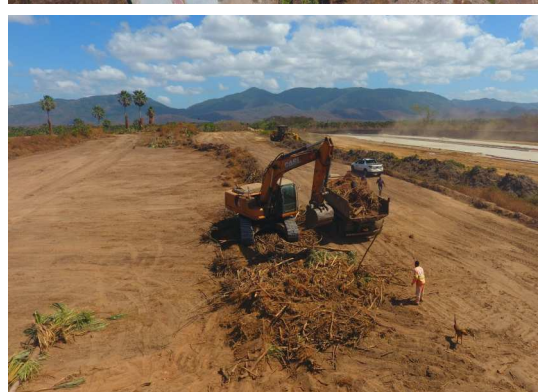
**PROJECT  
 UNDER  
 CONSTRUCTION**





**Project Features:**

1. Earthworks;
2. Drainage;
3. Retaining structures;
4. Execution of Industrial Warehouses.



**PROJECT  
UNDER  
CONSTRUCTION**



**Project Features:**

1. Topographic Survey and Geotechnical Study;
2. Design and Execution of Earthworks and Paving;
3. Design and Execution of Drainage.



**COMPLETED  
PROJECT**





**Project Features:**

1. Execution of an Auditorium;
2. New Plenary;
3. Metal Walkway connecting to the Court of Justice of the State of Ceará (TJCE).

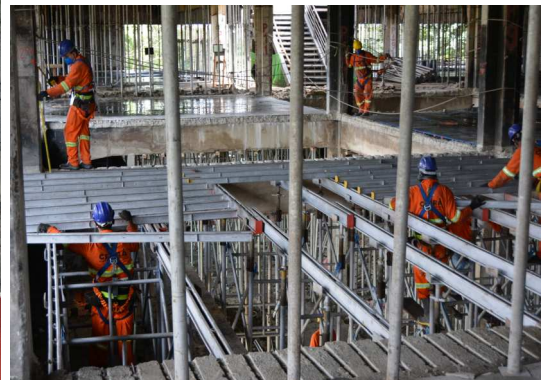


**COMPLETED  
PROJECT**



### Project Features:

The reconstruction aligns with the strategic objective of the Judiciary, aimed at providing a safe, accessible, sustainable, and flexible physical structure for judges, employees, collaborators, and the public. The new headquarters includes the implementation of shared workspaces (coworking), following accessibility standards and fire and panic safety regulations, in addition to sustainability measures, such as the adoption of energy-efficient solutions, cogeneration of energy with solar panels, and water reuse. It will also feature an air renewal system, focusing on the health of the collaborators.



**COMPLETED  
 PROJECT**





**BUILDING OF THE SECRETARIAT OF PUBLIC SECURITY  
AND SOCIAL DEFENSE OF THE STATE OF CEARÁ - SSPDS  
AREA: 8,848.50 m<sup>2</sup>**

**Project Features:**

1. Administration Building;
2. CIOPS Building - Integrated Security Operations Center;
3. Video Monitoring Room and Crisis Situation Room;
4. Auditorium, General Archive, and Helipad with 1,024 m<sup>2</sup>.



**COMPLETED  
PROJECT**

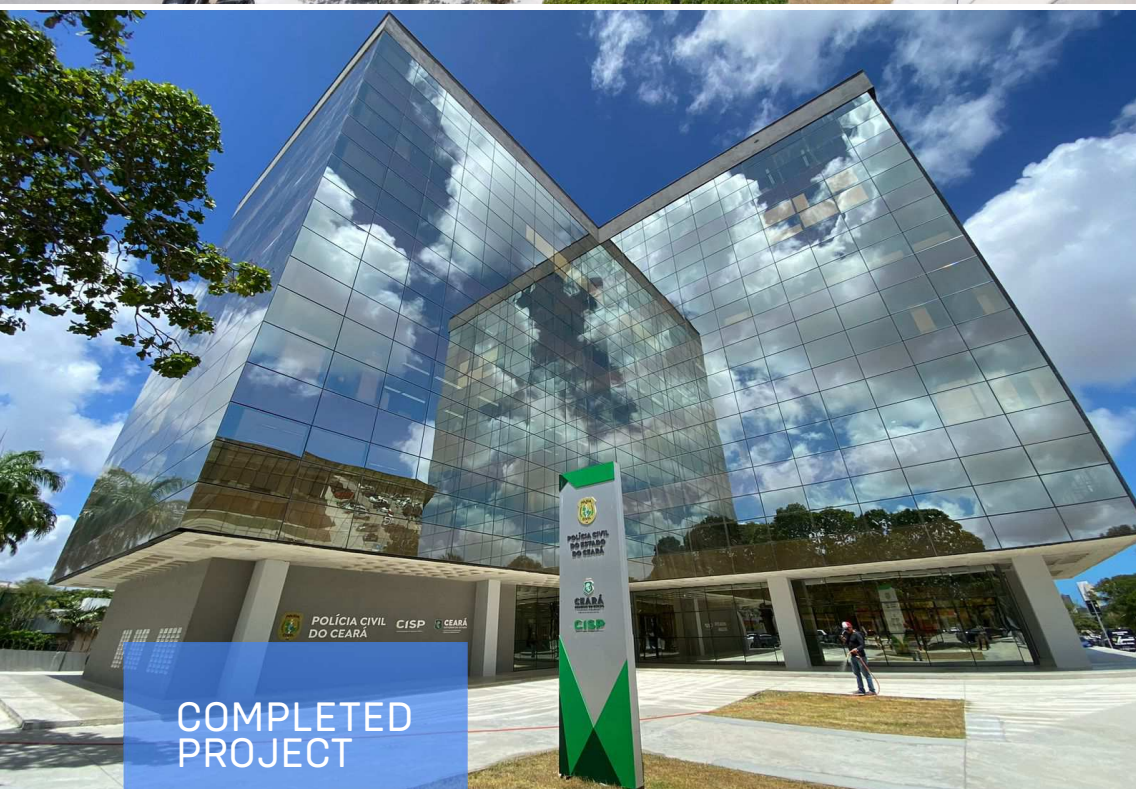




**BUILDING OF THE GENERAL COMMAND OF THE  
CIVIL POLICE | AREA: 5,265.07 m<sup>2</sup>**

**Project Features:**

1. General Police Station;
2. Specialized Police Stations;
3. Situation Room;
4. Auditorium, General Archive, and Administrative and Technical Areas.





**BUILDING OF THE GENERAL COMMAND OF THE  
MILITARY POLICE | AREA: 4,989.41 m<sup>2</sup>**

**Project Features:**

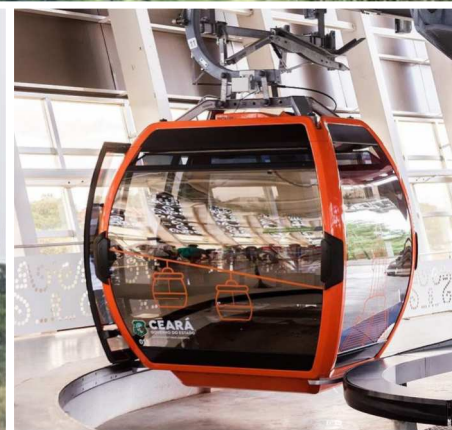
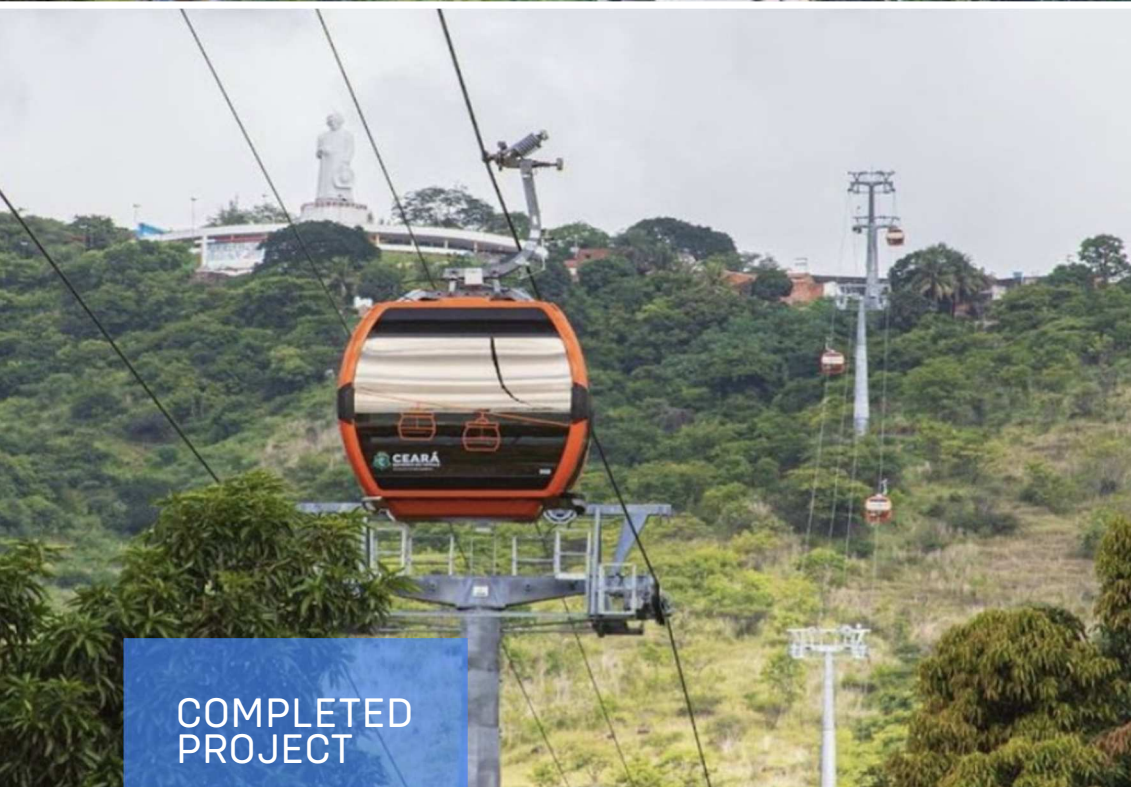
1. Auditorium;
2. Gym;
3. Office;
4. General Archive and Administrative / Technical Areas.





**Project Features:**

1. Air-Conditioned Cabins with Wi-Fi, Manufactured in Switzerland, with Capacity for 10 People | 26 Units;
2. 2 Km Route and 200 M Elevation Difference, Completed in 7:30 Minutes;
3. Transport Capacity of 1,000 Passengers per Hour;
4. Lower Station - Monsenhor Murilo de Sá Barreto Station;
5. Upper Station - Beata Maria de Araújo Station.





**Project Features:**

- |                            |                             |
|----------------------------|-----------------------------|
| 1. Theater for 500 People; | 6. Skate Park;              |
| 2. Library;                | 7. Planetarium;             |
| 3. Exhibition Room;        | 8. Beach Volleyball Courts; |
| 4. Artistic Laboratories;  | 9. Sand Soccer Courts;      |
| 5. Artist Accommodation.   | 10. Playground Square.      |

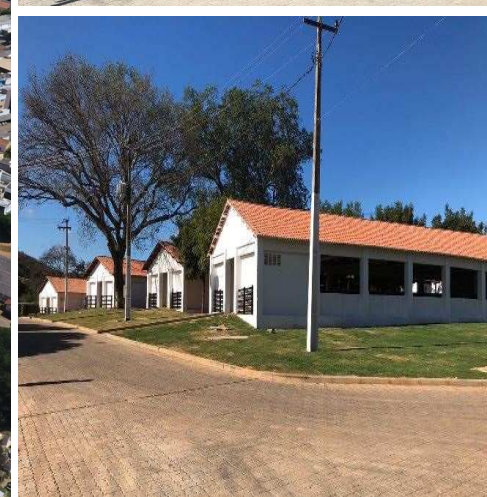


**COMPLETED  
PROJECT**



**Project Features:**

1. Fair Zone with 19 Buildings, including 7 New Steel Structure Buildings and 11 Renovated Buildings;
2. Multipurpose Zone;
3. New Avenue with 1.2 km Length and 14 m Width;
4. Public Lighting Network for 1.2 km.





**Project Features:**

225 KVA Substation / 13,800-380/220V



**COMPLETED  
PROJECT**





# 02

OUR MAIN  
ACHIEVEMENTS

---

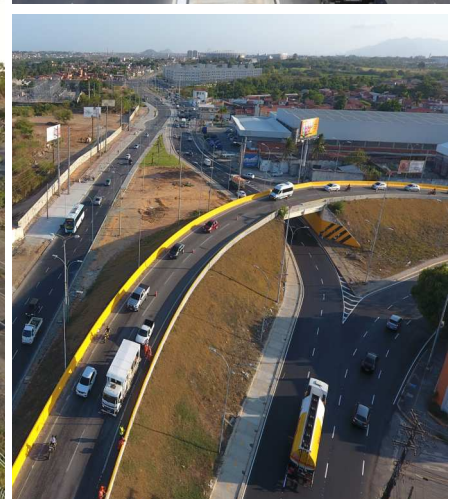
**ROADWORKS**





**Project Features:**

1. 1000 m of Bike Paths / Cycle Lanes;
2. Reinforced Concrete Bus Stops (25 MPa);
3. Surface Drainage;
4. Deep Drainage;
5. Asphalt Pavement (CBUQ);
6. Urbanization.



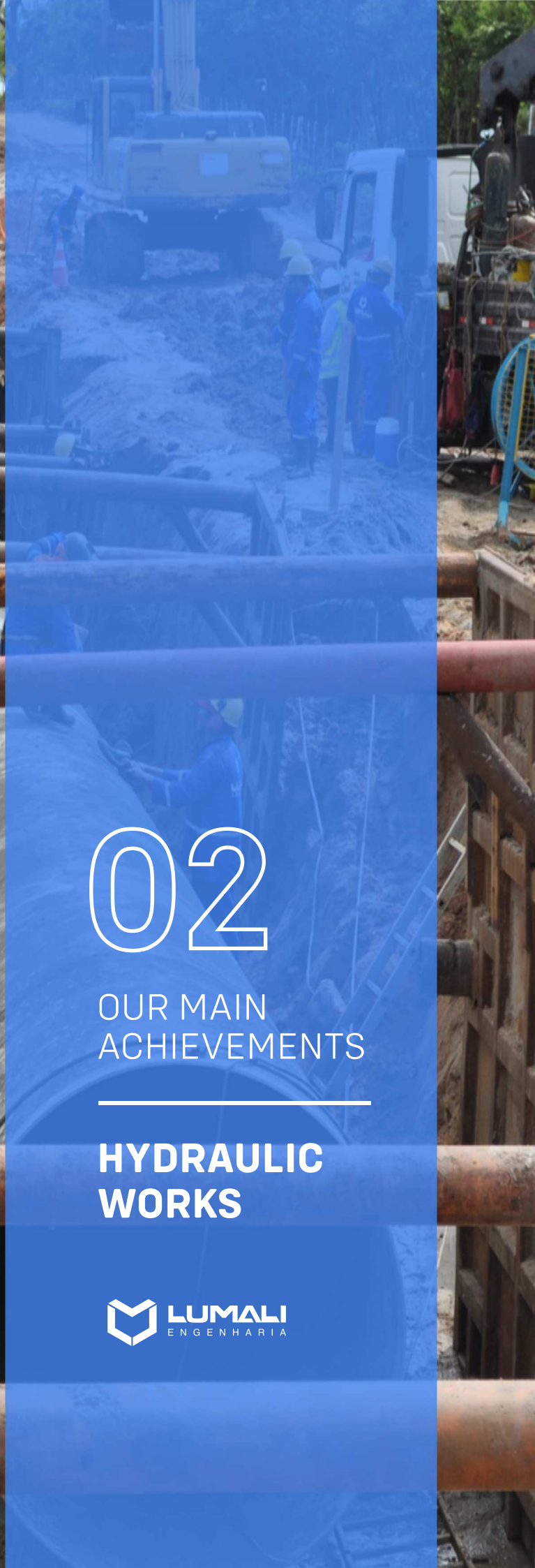


**Project Features:**

1. New Restaurant for Tax Administration Employees;
2. Renovation of the Sefaz Building;
3. Accommodation for Tax Administration Employees;
4. 1000 Meters of Deep Drainage in HDPE;
5. Renovation of the Entrance Ramps to the SEFAZ Parking Lot.







# 02

OUR MAIN  
ACHIEVEMENTS

---

**HYDRAULIC  
WORKS**



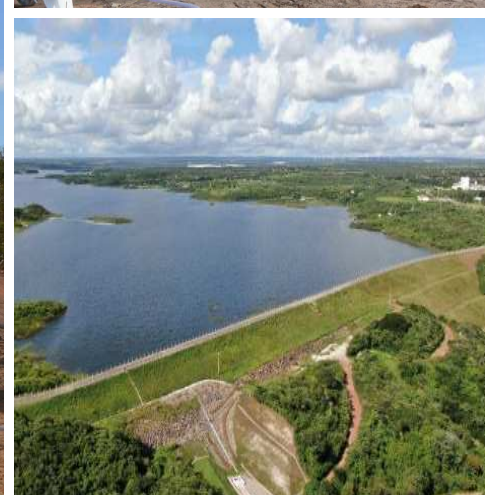


**Project Features:**

1. Zoned Earth Dam with a Sand Core and Accumulation Capacity of 141 Million M<sup>3</sup>
2. Dam Height: 46 m
3. Crest Length: 770 m
4. Cement Injection with Supply at a Maximum Pressure of 0.25 kg/m Depth (Cement Grout Injection): 8,600 Bags



**COMPLETED  
PROJECT**





**Project Features:**

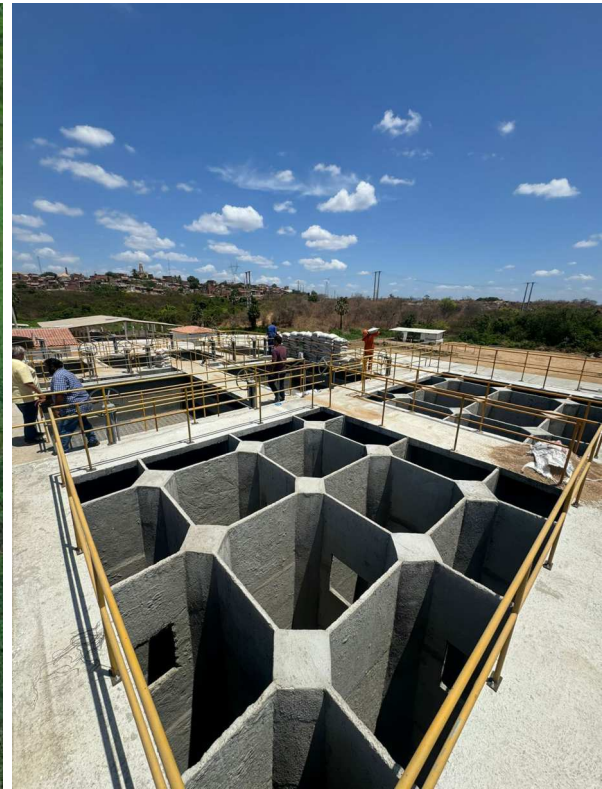
1. Mixed Dam (CCR/Earth) with Accumulation Capacity of 488 Million M<sup>3</sup>;
2. Dam Height: 39 m;
3. Crest Length: 830 m.



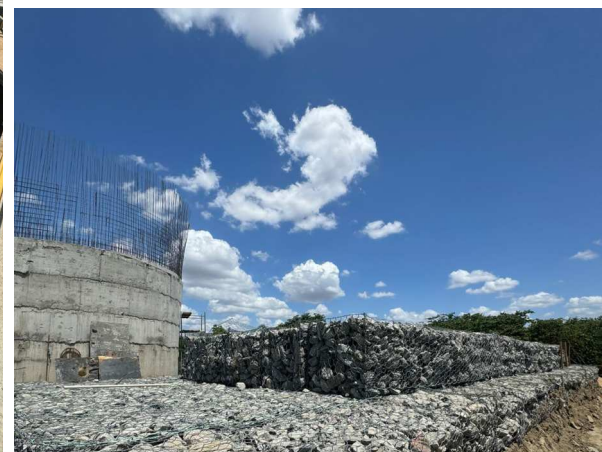


**Project Features:**

1. Flow Rate of 260 M<sup>3</sup>/h per ETA (Water Treatment Plant) - 2 Units
2. Waste Treatment Station (ETRG)
3. Wash Water Decanter - DAL (Decantation Tank), Recovered Water Tank, Drying Bed
4. Pumping Station
5. Supported Reservoir: 1,800 M<sup>3</sup>
6. 31,500 m of Water Conduit, D=1,500 mm



**COMPLETED  
PROJECT**





**Project Features:**

INSTALLATION OF STEEL PIPES D=1,500 MM AND 1,800 MM | 4,000.00 M



**COMPLETED  
PROJECT**



# 02

OUR MAIN  
ACHIEVEMENTS

---

**MAINTENANCE  
WORKS**





**Project Features:**

Provision of Specialized Services for Preventive, Corrective, and Predictive Maintenance (Including Supply of Parts and Materials) for Electrical-Electronic, Electromechanical, Mechanical, and Automation Systems.



**COMPLETED  
PROJECT**



**Project Features:**

Project Features: Maintenance of 13.8KV substations, petroleum derivative pipelines, fire pumps, industrial boilers, machines and motors, concrete structures, floors, roofing, masonry, and potable water systems.

**COMPLETED  
PROJECT**



**Project Features:**

Industrial maintenance services (boilermaking, welding, machining) in the Distillery Sector during the 2018/2019 off-season. Location: São José Farm, FN 001 Road, km 38, in the municipality of São Raimundo das Mangabeiras-MA.







02

OUR MAIN  
ACHIEVEMENTS

---

**RENEWABLE  
ENERGIES**





**Project Features:**

SUPPLY AND ASSEMBLY OF Power Plant with a capacity of 89.68 kWp -> Estimated average generation of 11,746 kWh, located in the municipality of Caucaia, Ceará.

**COMPLETED  
PROJECT**





# 02

OUR MAIN  
ACHIEVEMENTS

---

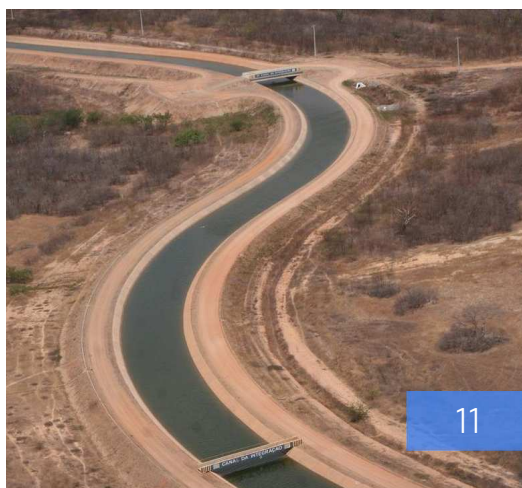
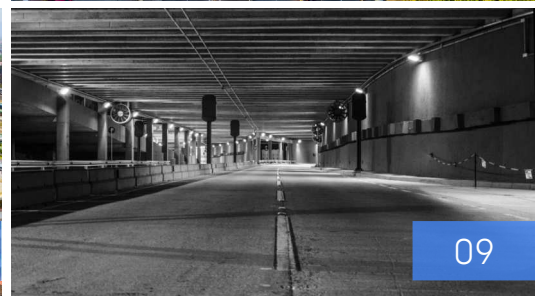
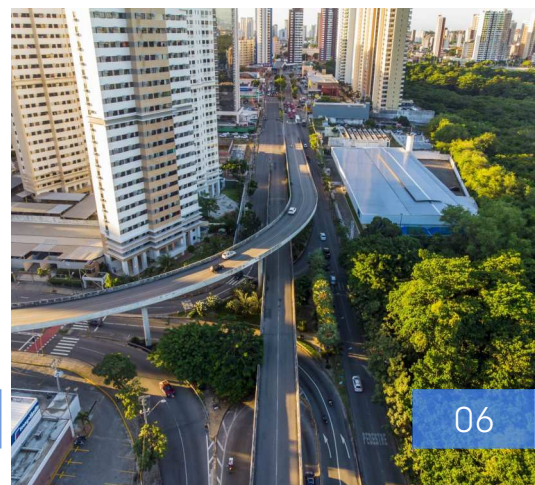
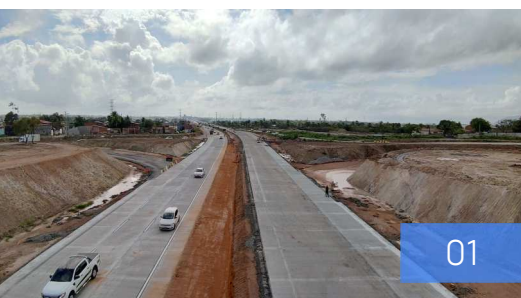
**TECHNICAL  
RESPONSIBILITY**





- 1 - CEARÁ RING ROAD;
- 2 - FIGUEIREDO DAM;
- 3 - BRT AGUANAMBI AVENUE;
- 4 - BRT AGUANAMBI AVENUE - VIADUCT;
- 5 - BRT BEZERRA DE MENEZES / ANTÔNIO SALES AVENUE;
- 6 - BRT BEZERRA DE MENEZES / ANTÔNIO SALES AVENUE - VIADUCT;

- 7 - CAC - CEARÁ WATER BELT - HYDRAULIC TUNNEL;
- 8 - CEARÁ STATE EVENT CENTER - CEC AND ACCESS TUNNELS - ACEC;
- 9 - ACCESS TUNNELS TO THE EVENT CENTER - ACEC;
- 10 - CEARÁ OLYMPIC TRAINING CENTER - CFO;
- 11 - CASTANHÃO-FORTALEZA INTEGRATION AXIS - WATER AXIS LOT 1;
- 12 - CASTANHÃO-FORTALEZA INTEGRATION AXIS - WATER AXIS LOT 2.





13 - NEW CASTELÃO STADIUM;  
 14 - BRT BEZERRA DE MENEZES AVENUE / ANTÔNIO BEZERRA TERMINAL;  
 15 - BRT AGUANAMBI AVENUE / PEDESTRIAN OVERPASS;  
 16 - EXPRESSWAY BRIDGE X COCÓ RIVER;  
 17 - TRANSFER OF WATER FROM ORÓS RESERVOIR TO THE FEITICEIRO REGION;

18 - ALBERTO SÁ AVENUE TRENCH;  
 19 - EXPRESSWAY X MURILO BORGES VIADUCT;  
 20 - PE ANTÔNIO TOMÁS AVENUE TRENCH X VIA EXPRESSA.



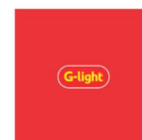




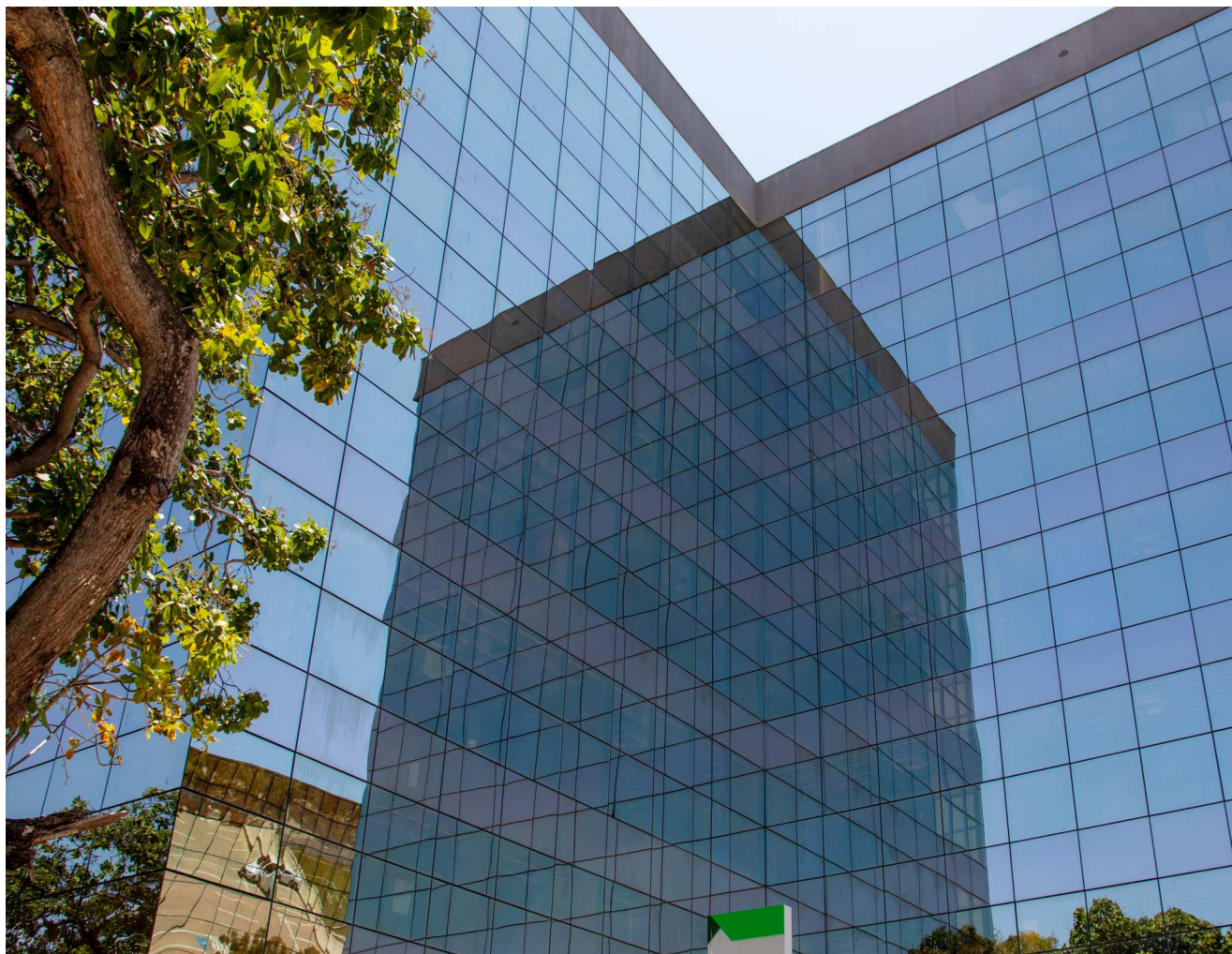
# 03

**MAIN SUPPLIERS,  
CLIENTS, AND  
PARTNERS**
















#### CORPORATE HEADQUARTERS OF THE COMPANY

Avenida Shopping & Office  
Dom Luis Avenue, 300 - Room 912  
ZIP Code: 60160-196 | Fortaleza - CE, Brazil  
Phone: +55 85 3103.0055

#### OFFICE

Edifício Mundo Plaza Torre Empresarial  
Tancredo Neves Avenue, 620 - Store 3305  
ZIP Code: 41820-020 | Salvador - BA, Brazil  
Phone: +55 85 3103.0055

 [www.lumali.com.br](http://www.lumali.com.br)  
 [lumali@lumali.com.br](mailto:lumali@lumali.com.br)  
 [@lumaliengenharia](https://www.instagram.com/lumaliengenharia)

